

PALS Systematic Approach Algorithm

The PALS Systematic Approach Algorithm (Figure 2) outlines the approach to caring for a critically ill or injured child.

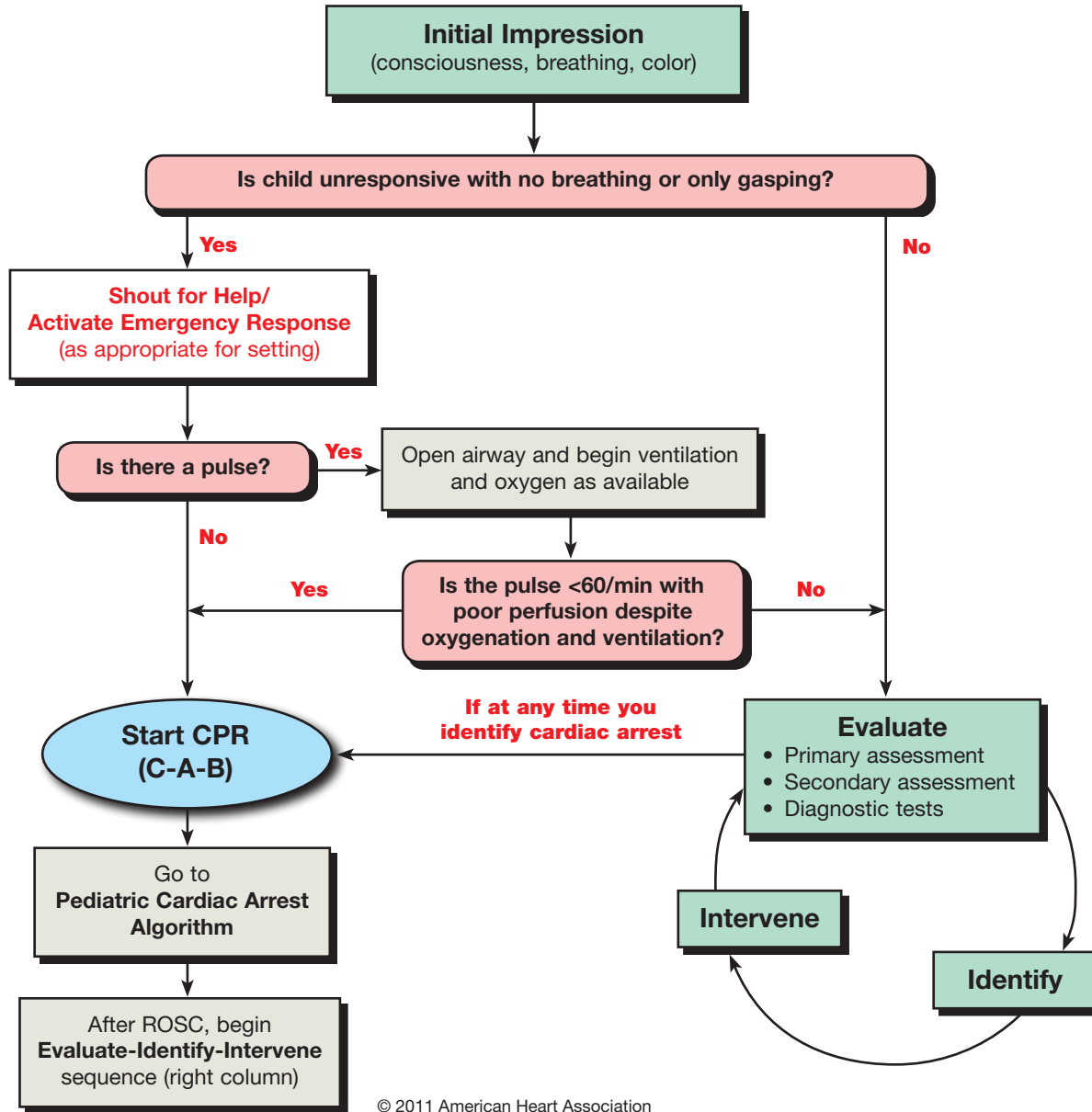


Figure 2. PALS Systematic Approach Algorithm.

Identify and Intervene

If You Identify a Life-Threatening Problem

If at any time you identify a life-threatening problem, immediately begin appropriate interventions. Activate emergency response as indicated in your practice setting.